

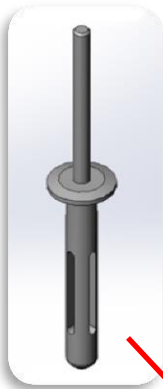
Tech Bulletin

Mounting Rub Strip to Track

Summary of Bulletin

Some sites have reported missing Rub Strips that have been torn off the Track most commonly due to events, crashes or jams that occur on the line.

In an effort to better secure the Rub Strip to the Track, and to reduce or eliminate this issue, Globe has changed from a screw fastening system to a more robust rivet fastening system. To help facilitate proper installation/location of the rivet, Globe has developed a drill fixture as noted below that is designed to work with a Ø13/64" drill.



GCS P/N: 03-80-1382

Description: Rivet (Bulb Type)

QTY: 6 every 12ft (1" from each end, then 28-3/8" spacing)

Additional Notes:

- You may need to remove carriages to re-install rub strips that have been torn off the track due to an event
- Jog speed only to rub strip replacement locations
- Use soft mallet to make sure rub strip is snapped into track bead properly before drilling or installing rivets
- Overlap track Seams with Rub Strip (Do not install the rub strip and track seams coincident to one another)
- **Operating the line with missing rub strip is not recommended, and may lead to further system damage as well as missed tips**

